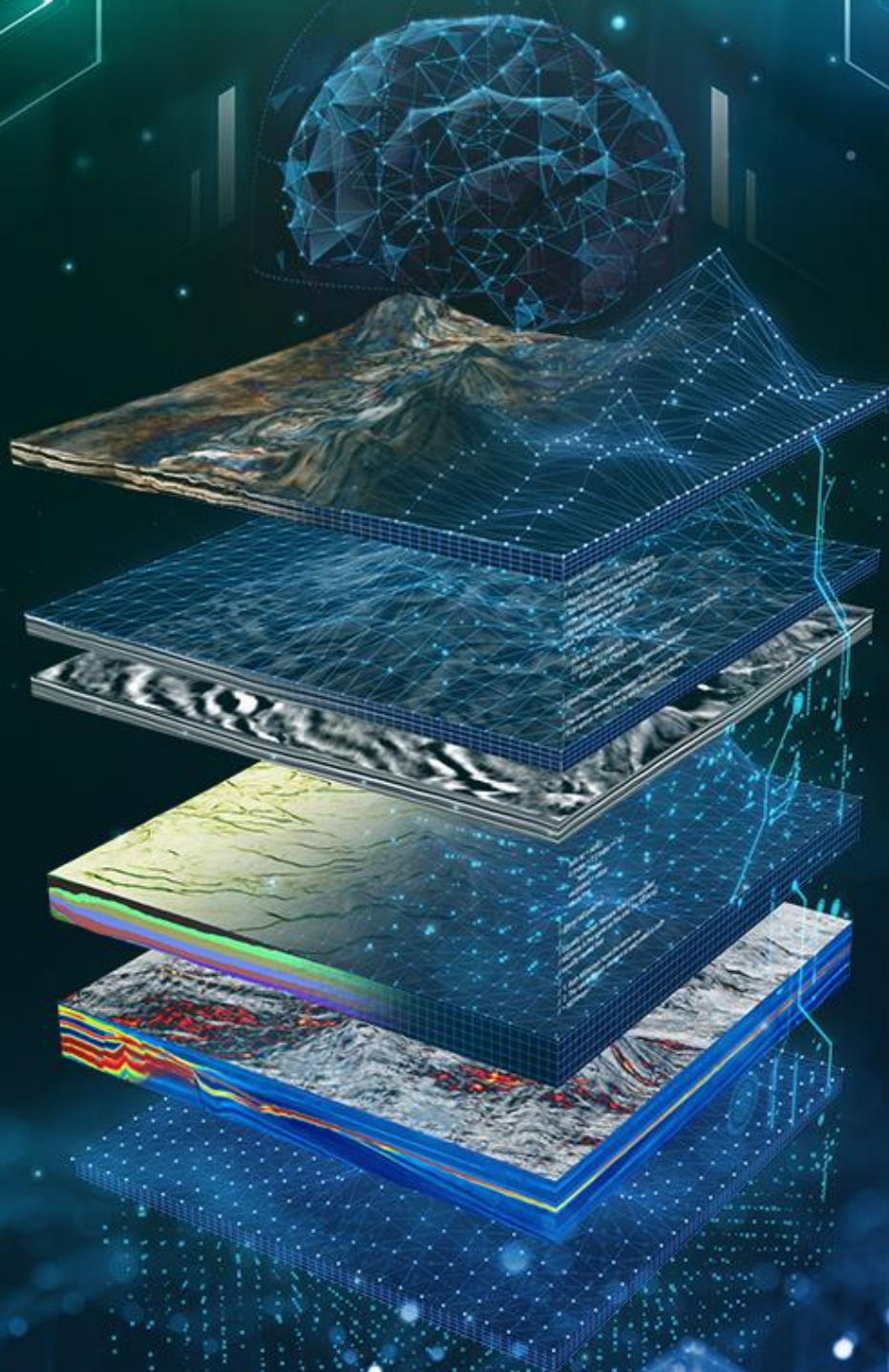


# PALEOSCAN™ 2024

Global Seismic Interpretation Platform



**DATA CONNECTOR - RELEASE NOTES**

**Petrel®**



# PaleoScan™ Data Connector 2024.2.0

## Petrel® to PaleoScan™

Feature	Description
<b>Ribbon</b>	A quick access to the PaleoScan™ Data Connector has been added to the Petrel® ribbon in the Seismic Interpretation module.
<b>Faults</b>	<p>Fault framework from the Structural model can now be transferred from Petrel® to PaleoScan™ as fault interpretation in one single fault set. The transfer can be done from the full Fault framework folder.</p> <p>Note: the transfer works only for Structural model created with new algorithm from Petrel® 2018.1</p>
	<p>Structural model faults from the Structural model can now be transferred from Petrel® to PaleoScan™ as fault interpretation in one single fault set. The transfer can be done from the full fault folder.</p> <p>Note: the transfer works only for the Structural model created with the new algorithm from Petrel® 2018.1</p>
<b>Fault set</b>	It is now possible to select a specific fault interpretation folder or multi-select faults in Petrel®, then, transfer it to PaleoScan™ in the same Fault set.
<b>CRS</b>	Improvement was done on the CRS management for volume transfer to PaleoScan™. Now, the object CRS is preserved when it is different from the Petrel® project CRS.

## PaleoScan™ to Petrel®

Feature	Description
<b>Horizons</b>	Transferring 3D seismic horizons from PaleoScan™ to Petrel® as a triangulated mesh surface is now possible.
<b>New Project creation</b>	The issue related to the newly created PaleoScan™ project has been fixed. It is now possible to create a new PaleoScan project from the PaleoScan™ Data Connector and transfer objects.

<b>2D Horizons</b>	Fixed crash related to 2D horizon transfer to Petrel® when an empty Survey is defined. Now it is not allowed to drop an empty seismic survey because it is not yet a defined as 2D or 3D survey. It is only allowed to drop an already defined 2D survey containing a 2D line.
<b>CRS</b>	Improvement was done on the CRS management for horizons transfer to Petrel®. Now, the object CRS is preserved when it is different from the Petrel® project CRS.

# Licensing

---

The PaleoScan™ Data Connector 2024 is included as an add-on module to PaleoScan™ 2024. It can be downloaded from Eliis website. A personal user account is required. If you do not have a login and password to access Eliis extranet, you can fill in this [form](#).

Eliis can provide a free 30-day temporary license to evaluate PaleoScan™ 2024 including the Petrel® plug-in. The temporary license will give full access to the software with all add-on modules.

# Compatibility

---

The PaleoScan™ Data Connector 2024.2 is only compatible with Petrel® 2024 and PaleoScan™ 2024.

	Required PaleoScan™ versions	Required Petrel® versions
PaleoScan™ Data Connector 2024.2	PaleoScan™ 2024 (64-bit) and above	Petrel® 2024 (64-bit)



## Copyright Notice

All rights reserved. No part of this document may be reproduced, stored in a retrieval system, or translated in any form or by any means, electronic or mechanical, including photocopying and recording, without the prior written permission of Eliis SAS, 3 Rue Jean Monnet, 34830 Clapiers, FRANCE.

## Disclaimer

The use of this product is governed by the PaleoScan™ Software License Agreement. Eliis makes no warranty, expressed, implied, or statutory, with respect to the product described herein and disclaims without limitation any warranty of merchantability or fitness for a particular purpose. Eliis reserves the right to revise the information in this manual at any time without notice.

## Contact

For any information request, you can contact us.

Web: [www.eliis-geo.com](http://www.eliis-geo.com)

---

Europe - Montpellier  
Eliis SAS

[contact@eliis.fr](mailto:contact@eliis.fr)  
+33 (0) 4.67.41.31.16  
+33 (0) 4 30 96 61 33  
(support)

North America - Houston  
Eliis Inc.

[contactus@eliis.fr](mailto:contactus@eliis.fr)  
+1 832 304 9817

Australia - Perth  
Eliis Pty Ltd

[contactau@eliis.fr](mailto:contactau@eliis.fr)  
+61 434 352 642

---

Malaysia – Kuala Lumpur  
Eliis Sdn Bhd

[contactmy@eliis.fr](mailto:contactmy@eliis.fr)  
+60 3 4810 3821

Brazil – Rio de Janeiro  
Eliis Ltda

[contactbr@eliis.fr](mailto:contactbr@eliis.fr)

---