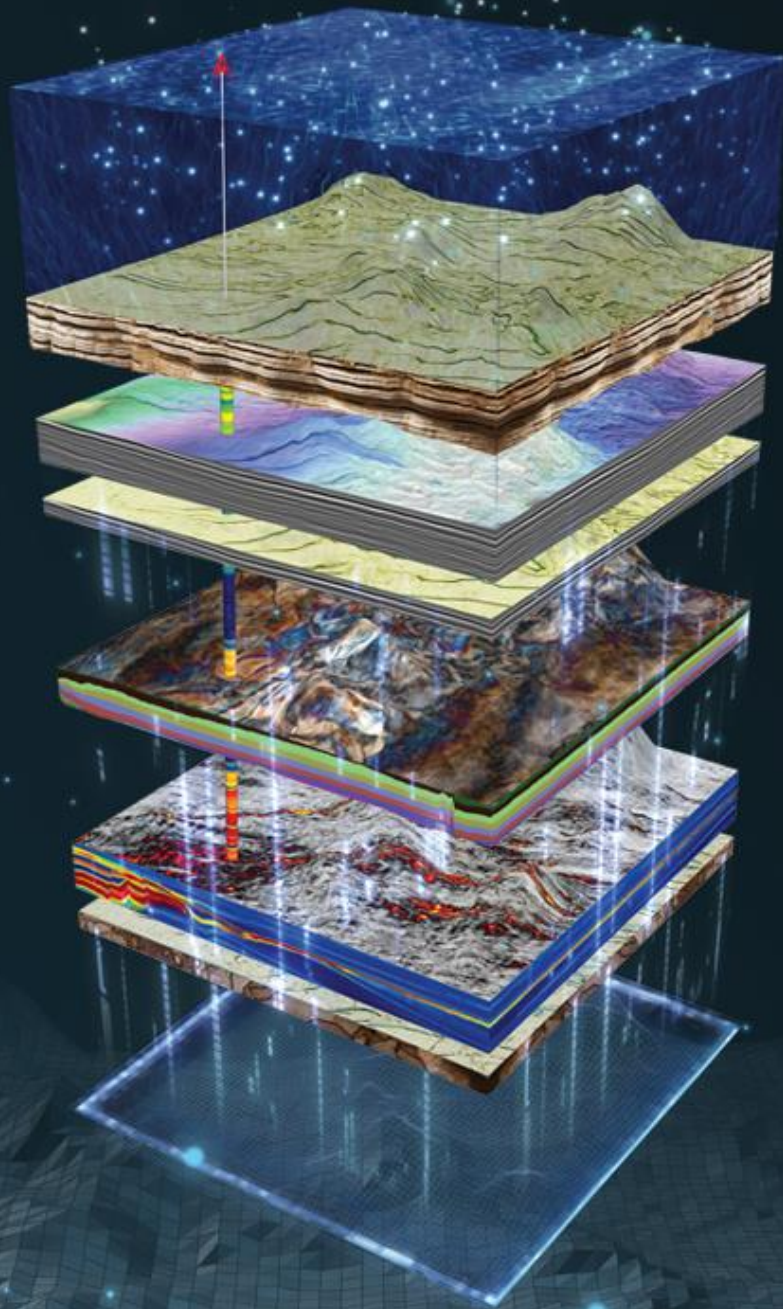


2023

---

# PALEOSCAN™

Integrated Seismic Interpretation Software



DATA CONNECTOR - RELEASE NOTES

Petrel®



# PaleoScan™ Data Connector 2023.2.0

---

## Petrel® to PaleoScan™

Feature	Description
Database	In the database area, Collapse and Expand options have been added.
Volume	Preview and Properties tabs have been improved to work with any selected seismic in the Project Browser.
2D Line	The multiple selection of 2D Lines has been enabled.
	Fixed issue on the 2D Lines transfer with incorrect Zmin and Zmax into PaleoScan™
CRS	Fixed issue on lost CRS information when transferring 2D Lines and Volumes.
	Fixed issue on Fault transfer with specific Petrel® CRS.
Project Loading	Improvement done on management of corrupted objects when loading PaleoScan™ project.

## PaleoScan™ to Petrel®

Feature	Description
Database	In the database area, Collapse and Expand options have been added.
CRS	A new option has been added to specify Petrel CRS when transferring Faults, Culture data and Wells.
2D Line	Fixed issue on vertical shift of transferred 2D line into Petrel®.

# Licensing

---

The PaleoScan™ Data Connector 2023 is included as an add-on module to PaleoScan™ 2023. It can be downloaded from Eliis website. A personal user account is required. If you do not have a login and password to access Eliis extranet, you can fill in this [form](#).

Eliis can provide a free 30-day temporary license to evaluate PaleoScan™ 2023 including the Petrel® plug-in. The temporary license will give you a full access to the software with all add-on modules.

# Compatibility

---

The PaleoScan™ Data Connector 2023.2 is only compatible with Petrel® 2023 and PaleoScan™ 2023.

	Required PaleoScan™ versions	Required Petrel® versions
PaleoScan™ Data Connector 2023.2	PaleoScan™ 2023 (64-bit) and above	Petrel® 2023 (64-bit)



## Copyright Notice

All rights reserved. No part of this document may be reproduced, stored in a retrieval system, or translated in any form or by any means, electronic or mechanical, including photocopying and recording, without the prior written permission of Eliis SAS, 3 Rue Jean Monnet, 34830 Clapiers, FRANCE.

## Disclaimer

The use of this product is governed by the PaleoScan™ Software License Agreement. Eliis makes no warranty, expressed, implied, or statutory, with respect to the product described herein and disclaims without limitation any warranty of merchantability or fitness for a particular purpose. Eliis reserves the right to revise the information in this manual at any time without notice.

## Contact

For any information request, you can contact us.

Web: [www.eliis-geo.com](http://www.eliis-geo.com)

---

Europe - Montpellier  
Eliis SAS

[contact@eliis.fr](mailto:contact@eliis.fr)  
+33 (0) 4.67.41.31.16  
+33 (0) 4 30 96 61 33  
(support)

North America - Houston  
Eliis Inc.

[contactus@eliis.fr](mailto:contactus@eliis.fr)  
+1 832 304 9817

Australia - Perth  
Eliis Pty Ltd

[contactau@eliis.fr](mailto:contactau@eliis.fr)  
+61 434 352 642

---

Malaysia – Kuala Lumpur  
Eliis Sdn Bhd

[contactmy@eliis.fr](mailto:contactmy@eliis.fr)  
+60 3 4810 3821

Brazil – Rio de Janeiro  
Eliis Ltda

[contactbr@eliis.fr](mailto:contactbr@eliis.fr)

---