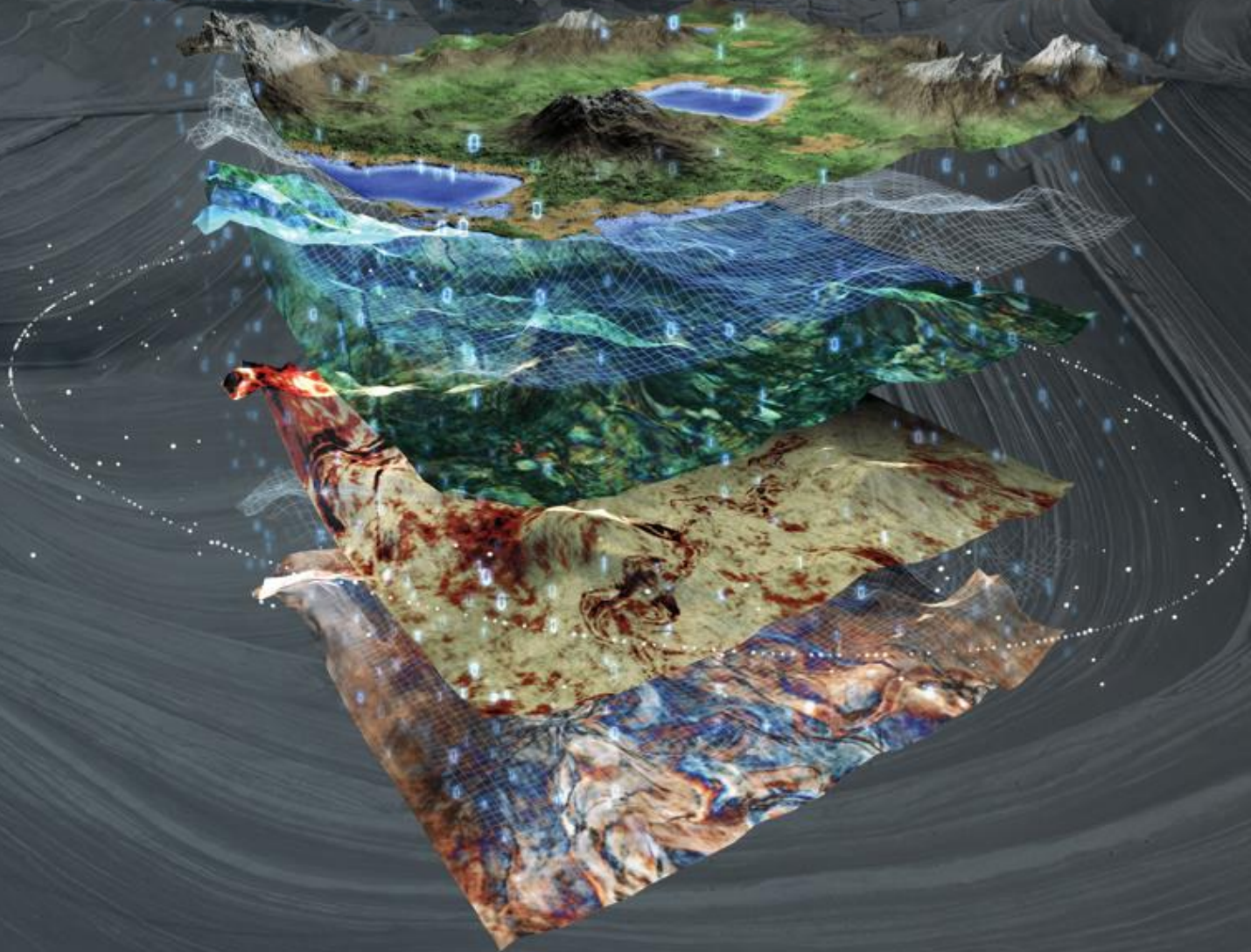


2022

PALEOSCAN™

Integrated Seismic Interpretation Software



RELEASE NOTES





Copyright Notice

All rights reserved. No part of this document may be reproduced, stored in a retrieval system, or translated in any form or by any means, electronic or mechanical, including photocopying and recording, without the prior written permission of Eliis SAS, 3 Rue Jean Monnet, 34830 Clapiers, FRANCE.

Disclaimer

The use of this product is governed by the PaleoScan™ Software License Agreement. Eliis makes no warranty, expressed, implied, or statutory, with respect to the product described herein and disclaims without limitation any warranty of merchantability or fitness for a particular purpose. Eliis reserves the right to revise the information in this manual at any time without notice.

Contact

For any information request, you can contact us.

Web: www.eliis-geo.com

Europe - Montpellier
Eliis SAS

contact@eliis.fr
+33 (0) 4.67.41.31.16

North America - Houston
Eliis Inc.

contactus@eliis.fr
+1 281 404 1515

Australia - Perth
Eliis Pty Ltd

contactau@eliis.fr
+61 466 303 546

Malaysia – Kuala Lumpur
Eliis Sdn Bhd

contactmy@eliis.fr
+60 162 072 710

Brazil – Rio de Janeiro
Eliis Ltda

contactbr@eliis.fr
+55 (21) 99575-0071

Table of Contents

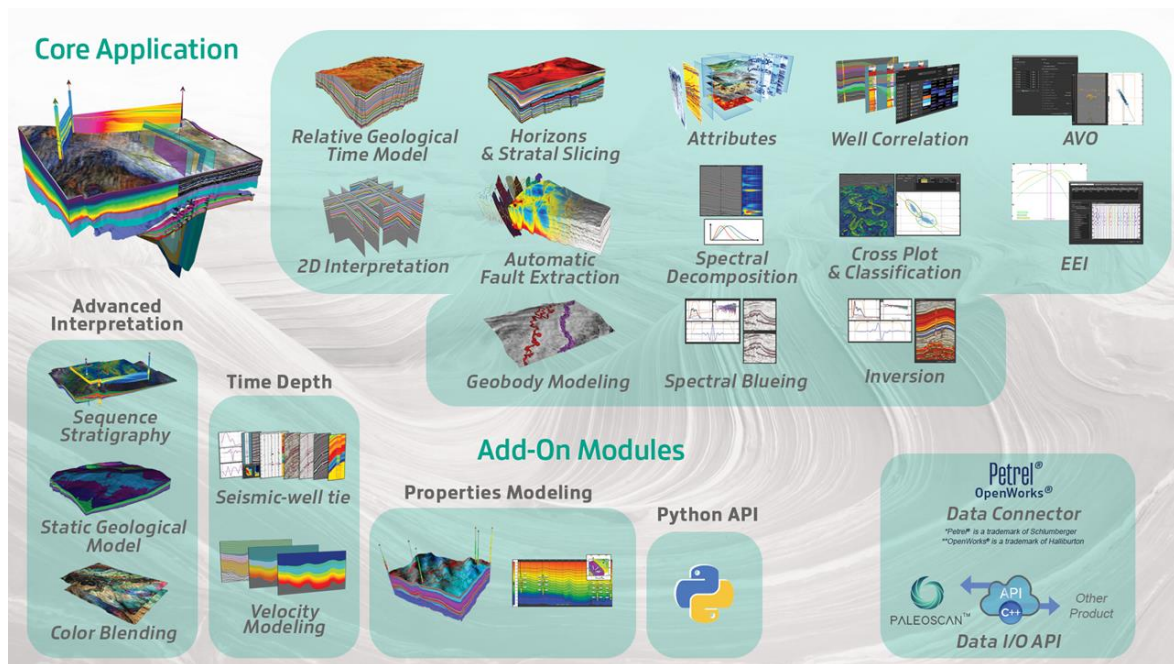
TABLE OF CONTENTS	3
PALEOSCAN™ 2022	4
Platform	5
Data Import	5
Data Export	6
General Tools	6
Volumes	6
2D Lines	7
2D Line Sets	7
Model-Grid	8
Horizon	9
Horizon Stack	9
Fault	9
LICENSING	10
PROJECT COMPATIBILITY	10
HARDWARE REQUIREMENTS	10

PaleoScan™ 2022

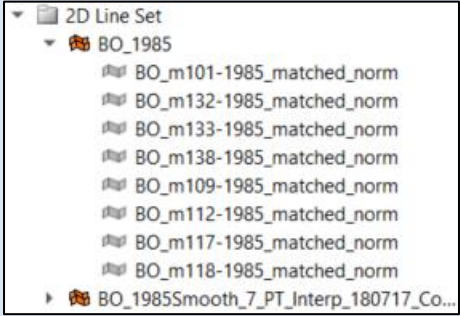
PaleoScan™ is a new generation of seismic interpretation software, where geoscientists build a geological model while interpreting seismic volumes. With this new release, Eliis continues to innovate seismic interpretation by introducing additional tools to interpret larger seismic datasets, with added speed and precision.

We are thrilled to announce the launch of **PaleoScan™ 2022.1**! The major highlight of this new version is the integration of **Bluware FAST™** adaptive technology to stream seismic volumes stored in VDS format in the **OSDU™ Data Platform**. The extremely efficient VDS compression capability drastically **reduces storage capacity** and **minimizes data silos** without any loss in the application’s interactivity. This functionality is now available as a **beta version** in the core application until January 2023 to foster collaboration and collectively build the next steps of Paleoscan OSDU™ Data Platform Journey. We also focused on improving the performance of the Paleoscan™ **2D workflow** as well as facilitating users’ navigation through the application. Get the latest version, speed up your interpretation cycle, increase your screening capacity and identify early-stage prospects!

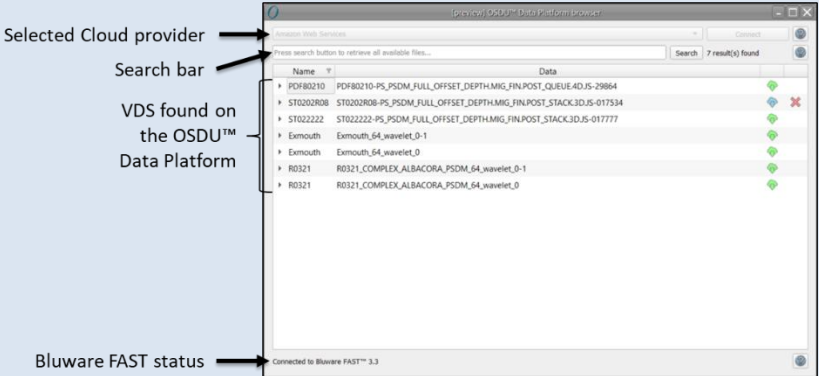
This document lists all the new features and upgrades implemented in Paleoscan™ 2022. A detailed description of each tool can be found in the “User Guide” or on the web site (www.eliis-geo.com).



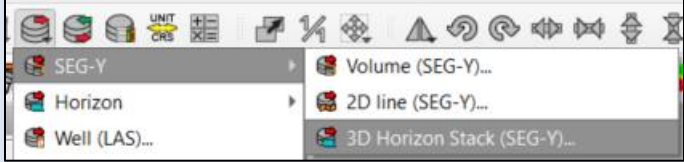
Platform

Feature	Description
Project Browser	<p>All the 2D Line names included in each 2D Line Set are displayed underneath 2D Line Set object</p>  <p>Labelling homogenization to open objects in the 3D viewer from the Project Browser</p>

Data Import

Feature	Description
[preview] OSDU™ Data Platform Browser	<p>To search and mount VDS volumes stored in OSDU™ Data Platform using Bluware FAST™ adaptive streaming technology</p> 
2D Horizon	Speed-up import of IESX

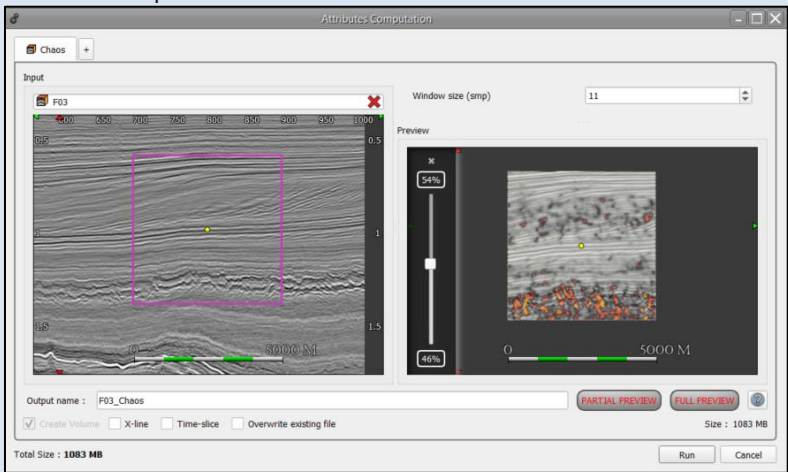
Data Export

Feature	Description
Horizon Stack	Export Horizon Stack as a SEG-Y volume 

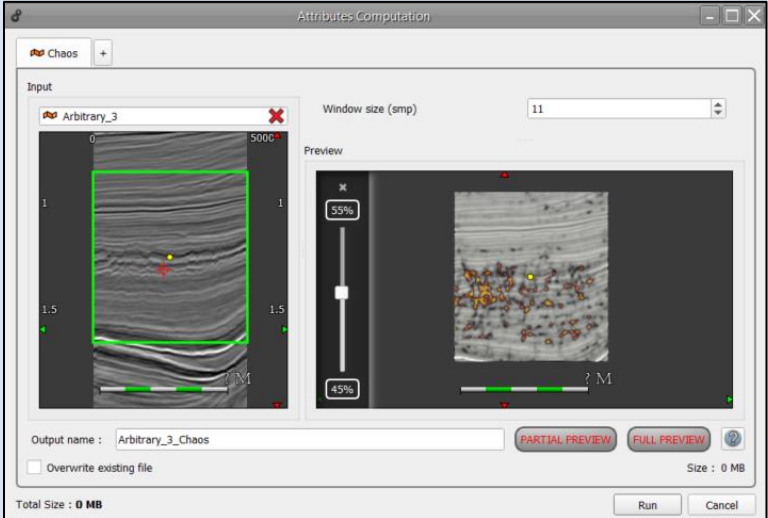
General Tools

Feature	Description
Error Management	More complete crash information with process memory value

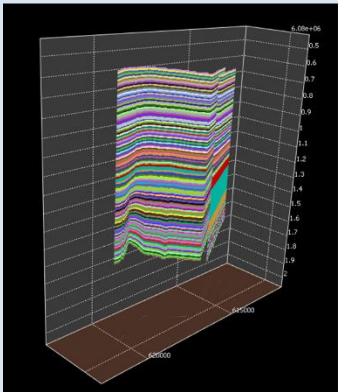
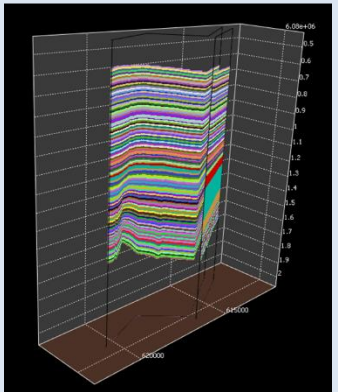
Volumes

Feature	Description
Attributes	<p>The attribute preview can be partial (near a focus point) or full (on the whole frame)</p> <p>The attribute preview is now a blending viewer, between the input volume and the attribute preview</p> 

2D Lines

Feature	Description
<p>Attributes</p>	<p>The attribute preview can be partial (near a focus point) or full (on the whole frame)</p>
	<p>The attribute preview is now a blending viewer, between the input volume and the attribute preview</p> 

2D Line Sets

Feature	Description
<p>Properties</p>	<p>New option “Wireframe” to control the display of 2D Line Set skeleton</p> <div style="display: flex; justify-content: space-around;"> <div style="text-align: center;"> <p>Wireframe off</p>  </div> <div style="text-align: center;"> <p>Wireframe on</p>  </div> </div>
	<p>2D Viewer</p>

<p>Display Optimization</p>	<p>Improving the display of 2D Line Set in a 3D and 3D Viewer and Horizon Viewer making the navigation more interactive</p>

Model – Grid

Feature	Description
<p>3D Model-Grid</p>	<p>New advanced parameter to vertically shift the horizon used as a constraint for the creation of the Model-Grid</p>
<p>2D Model-Grid</p>	<p>New advanced parameter to vertically shift the horizon used as a constraint for the creation of the Model-Grid</p>
<p>2D Model-Grid Viewer Properties</p>	<p>Renamed "UTM Sampling" property into "Map Resolution" and increased the default value. This property is now accessible directly from the Horizon viewer property</p>

Horizon

Feature	Description
Properties	Object properties are accessible by clicking on the horizon in the project browser. Opening the horizon is not mandatory anymore to view its properties

Horizon Stack

Feature	Description
Properties	Object properties are accessible by clicking on the horizon stack in the project browser. Opening the horizon stack is not mandatory anymore to view its properties

Fault

Feature	Description
Properties	Renamed "UTM Sampling" property into "Mesh Resolution"

Licensing

PaleoScan™ 2022 can be downloaded from the [Eliis web site](#). A personal user account is required. If you do not have a login and password to access to the Eliis extranet, you can apply for one by completing this [form](#).

Eliis provides you a free 30-day temporary license to evaluate PaleoScan™ 2022. The temporary license will give you full access to the software with all add-on modules.

Project Compatibility

The PaleoScan™ platform is compatible with all PaleoScan™ projects.

Forward compatibility:

Projects saved with previous versions of PaleoScan™ can be updated to PaleoScan™ 2022 when the projects are being loaded.

Backward compatibility:

Projects created with PaleoScan™ 2022 can also be opened with previous versions (2021). However, some new object properties might not be readable by earlier versions.

Hardware Requirements

PaleoScan™ is a Microsoft Windows® stand-alone software, running on PC equipped with a 64-bit processor with the minimum requirements equivalent to the below mentioned items:

Minimum system configuration-

- 16 GB RAM
- 4-core/6-core
- Graphical card ATI Radeon or NVidia GeForce 512Mo
- 64-bit Windows® 7/8/10/11

Recommended system configuration-

- 64 GB RAM
- 8-core/16-core
- 2 GB NVIDIA® / ATI® graphic card
- 64-bit Windows® 7/8/10/11